



REPUBLIC OF KENYA

**MINISTRY OF EAST AFRICAN COMMUNITY, ASALs AND REGIONAL
DEVELOPMENT**

STATE DEPARTMENT FOR THE ASALs AND REGIONAL DEVELOPMENT

Kenya Development Response to Displacement Impacts Project(P161067)

2ND QUARTER IMPLEMENTATION PROGRESS REPORT

FINANCIAL YEAR 2022/2023

Reporting Period: 1st October 2022 to 31st December 2022

LIST OF ABBREVIATIONS

AWP&B	: Annual Workplan and Budget
CFs	: Community Facilitators
CGs	: Community Groups
COM	: Community Operations Manual
CGs	: Community Groups
CGMC	: Community Groups Management Committee
CIPIU	: County Integrated Project Implementation Unit
CPMC	: Community Project Management Committee
CSC	: County Steering Committee
CTC	: County Technical Committee
DANIDA	: Danish International Development Agency
EHS	: Environmental and Health Safety
ESMF	: Environmental and social Management Framework
ESMP	: Environmental and Social Management Plan
FP	: Facilitating Partner
FY	: Financial Year
GBV	: Gender-Based Violence
GRC	: Grievance Redress Mechanisms
GRM	: Grievance Redress Mechanism
HEIS	: Hands-on Extended Implementation Support
IGAD	: Intergovernmental Authority Development
KEFRI	: Kenya Forestry Research Institute
KFS	: Kenya Forest Service
KDRDIP	: Kenya Development Response to Displacement Impacts Project
LIPW	: Labour Intensive Public Works
MIS	: Management Information System
MTR	: Mid-Term-Review
MOU	: Memorandum of Understanding

NPIU	: National Project Implementation Unit
NSC	: National Steering Committee
O&M	: Operation and maintenance
PIM	: Project Implementation Manual
PIST	: Project Implementation Support Team
SAC	: Social Audit Committee
SMs	: Social Mobilizers
SP	: Sub Project
ToR	: Terms of Reference
VLC	: Village Level Committee.
VMG	: Vulnerable and Marginalized Group
VMI	: Vulnerable and Marginalized Individuals
WB	: World Bank
WC	: Ward Committee
WBISM	: World Bank Implementation Support Mission

Table of Content

1.0: Project Overview	4
2.0: Introduction	5
2.1: Key Agreed Actions in Aide Memoir	5
2.2: Tracking indicators in the Results Framework	5
3.0: OVERALL IMPLEMENTATION PROGRESS	5
3.1 Implementation Status for Financial Year 2020/2021 and 2021/2022 by County.....	7
3.1.1 Wajir South Sub-County	7
3.1.2 Implementation of FY2021 2022 Sub-projects - Component 1	7
Component 2: Environmental and Natural Resource Management	8
<i>Implementation of FY2021-2022 Sub-projects component 2</i>	8
1.1. Component 3: Livelihoods Program	9
3.2.3 Turkana West Sub-County.....	10
RECOMMENDATIONS	14
3.2.4 Garissa County	21

ENVIRONMENTAL AND NATURAL RESOURCE MANAGEMENT.....	23
LIVELIHOOD PROGRAM	23
4.0 COMPONENT 4: PROJECT MANAGEMENT, MONITORING AND EVALUATION AND KNOWLEDGE SHARING	24
WB and PIU Consultative meeting	25
IGAD RPSC MEETING	25
9 th WB Implementation Support Mission, Turkana County	27
Financial Management.....	29
Social And Environmental Safeguards	30
Procurement	31
M&E, Communication and ICT	31
5.0 Implementation Challenges.....	34
CONCLUSION	35

1.0: Project Overview

The Kenya Development Response to Displacement Impacts Project (KDRDIP) is a five-year project that aims at providing priority support to communities in Garissa County (Lagdera, Dadaab and Fafi Sub Counties) Wajir south sub county and Turkana west sub county, that have hosted refugees for over 30 years.

Over the last 30 years, the Government of Kenya has provided safety for refugees around Dadaab and Kakuma camps within the Counties of Garissa, Wajir and Turkana. The prolonged presence of refugees in the three project counties impacted negatively to the host communities and deepened poverty levels.

This led to increased demand for natural resources, water, pasture and fuel-wood which caused degradation of the environment. KDRDIP was therefore designed to reduce the impacts caused by longstanding presence of refugees

The project is domiciled in the State Department for the ASALs and Regional Development in the Ministry of East African Community, ASALs and Regional Development. The department's core mandate is to accelerate development activities in the arid and semi-arid lands in Kenya.

The Project's Development Objective (PDO) is to improve access to basic services, expand economic opportunities, and enhance environmental management for communities hosting refugees in the target areas.

Project Start Date: 1st July 2017

Project Cost: USD 100 Million Loan from WB and USD 8 Million DANIDA Grant

Project Closing Date: 30th December 2023

Disbursement Status: The project has disbursed estimated USD 89 million to date.

Type of financing instrument: Investment Project Financing.

Project Rating: The project's progress towards achievement of the Development Objective (PDO) and Implementation Progress (IP) was rated Moderately Satisfactory (MS) in the last Mission.

2.0: Introduction

The 2nd quarter report Covers project activities from October to December 2022. This is coming at the time when the project teams are implementing reviewing progress after undertaking the mid-term review (MTR) of the project. The MTR mission sought to conduct review of the project towards achieving its desired targets to inform next course of action. The review came after implementation of two Financial Years interventions across all the components.

During the period under review the project continued implementation of investment sub project and livelihood programs for FY 2021/2022 that included screening of subprojects, preparation of safeguard instruments and actual implementation. Further the project prepared A.I.Es and disbursement of funds for the FY 2022/2023.

2.1: Key Agreed Actions in Aide Memoir

The WB and PIUs conducted 9th WBISM in the month of November 2022 and documented key agreed actions in Aide Memoir and shared the same for a follow up. The draft report for WBISM is provided in the annex.

2.2: Tracking indicators in the Results Framework

The Project PIU together with the Bank discussed the project end target and agreed to revise the targets likely not to be achieved by the end of the project period.

The team agreed to continuously track and report the indicators and milestones realized by the project. The updated result framework provided in the annex.

3.0: OVERALL IMPLEMENTATION PROGRESS

In summary Project Implementation Units (PIUs), Project Implementation Support Teams (PISTs), IGAD, the Facilitating Partners (FPs) with support from the WB team carried out the following activities: -

- PIU held a joint follow up consultative meeting on MTR AIDE Memoir progress on actionable areas and shared evidences of performance on on 4th October 2022.
- Monitoring of the implementation of the 2020-2021 and 2021-2021 Financial Year Sub-projects for component 1 and 2.

- The IGAD Regional Steering Committee Meeting was held between 12th -16th December 2022 in Gambella, Ethiopia involving all IGAD member Country.
- The component heads continued technical with the backstopping mission to the approved SPs and CGs for 2020/2021 and 2021/2022 Financial Year.
- Screening of the sub projects and communities' groups done and commencement of preparing of safeguard instruments.
- NPIU prepared AIEs for first half for SPs FY 2022/2023 and released funds to CIPIUs for onward disbursement to the CPMCs accounts.
- Contract of FPs come to an end in December 2022
- World Bank Implementation Support Mission was carried out between 7th to 16th November 2022 in Turkana West Sub County.
- The FP, CIPIU, NPIU with support from relevant PIST members continued to monitor the implementation of the FY2021/22 sub-projects activities carried forward to this financial year.
- The team also undertook the relevant documentation pertaining to the FY2021/2022, such as MoUs, Feasibility studies, BoQs, Designs, Hydrogeological surveys, Procurement Plans etc
- PIUs held various consultative meeting with the newly elected Members of County Assembly (MCAs) and MPs to provide updates on the status of project implementation.
- Safeguards team carried out Environmental and Social audit of selected sub-projects with support from E&S audit experts.
- On 9th to 13th December 2022, a consultant from IGAD accompanied by Dr. John Ngatia visited the project areas to carry out a study on how the project is mainstreaming the utilization of energy saving technologies such as the use of Jikos (energy saving stoves) and solar energy in boreholes and schools.
- In November 2022, both internal and external audit of the project was carried out and final report for external shared.

3.1 Implementation Status for Financial Year 2020/2021 and 2021/2022 by County

3.1.1 Wajir South Sub-County

In summary County Integrated Project Implementation Unit (CIPIU), Project Implementation Support Team (PIST), the Facilitating Partner (WARDA)¹ with support from NPIU carried out the following activities: -

- Completed the procurement process for all Component 1 and 2 for Sub-projects for FY 2021/2022 except Habaswein Hospital Sub-projects, which was affected by grievances.
- Completed 40% of Component 1 and 2 sub-projects completed and the rest are on-going.
- Monitoring of the funded Community Groups for FY2020/21 and FY 2021/2022, which was done successfully.
- Monitoring of the implemented sub-projects for FY2020-202 as well as FY2021-2022 for Component 1 and 2.
- Regular Joint Meetings with FP, PIST, CIPIU and NPIU.

3.1.2 Implementation of FY2021 2022 Sub-projects - Component 1

During this quarter, Wajir south team undertook;

- Completion of the procurement for all the Component one 55 Sub-projects and 38 Sub-projects in Component two for FY 2021 2022
- Implementation of the construction Works for education, water and health (ongoing) 40% of Sub-projects completed
- Monitoring of the implementation of Sub-projects by PIST, CIPIU and FP is being done continuously.

The following table shows the status of the activities undertaken.

Table showing status of FY2021 2022 activities for component 1 Sub-projects

S/No	Activity	Status	Remarks
1	Identification of Sub-projects sites	100%	Completed
2	Feasibility study of sub-projects	100%	Completed
3	Preparation of BQs and Designs per sub-project	100%	Completed
4	Preparation of MOUs per sector	100%	Completed
5	Hydrogeological surveys for boreholes	100%	Completed
6	Detailed procurement plans per sub-project	100%	Completed
7	Operation and Maintenance plan per sub-project	100%	Completed

¹ Please note that it is only the 7 Social Mobilizers (SMs) and 41 Community facilitators (CFs) of the FP who are working with the project on voluntary basis.

8	Implementation schedule per sub-project	100%	
9	Formation and training of CPMCs on Financial management and procurement per sub-project	100%	Training of CPMCs done
10	Opening of Bank accounts per sub-project	100%	
11	Preparation of safeguards documents for 2021-2022 sub-projects	90%	-Social and Environmental screening done for 55 sub-projects -Other follow up safeguard's documentation being completed
12	Release of Funds	100%	-Released funding for all sub-projects
13	Community Procurement Process and site hand over	100%	All the 55 sub-projects in component 1 have been procured
14	Implementation of Sub-projects (Actual works)	40%	80% of the Sub-projects for the FY202/2021 have been completed. See attached table
15	Monitoring of the implementation of the Sub-projects	100%	All Sub-project have been monitored by the FP, CIPIU and NPIU.

Component 2: Environmental and Natural Resource Management

Implementation of FY2021-2022 Sub-projects component 2

The implementation of Component 2 sub-projects for the financial year 2021-2022 is ongoing. CIPIU, WARDA and PIST members have undertaken the preparation of the required documents per sub-project. Procurement of Non-wage items have been completed and materials supplied to each CPMC. Currently, CIPIU and PIST are in the process of monitoring the implementation of Labour Intensive Public Works (LIPW) per sub-project.

Status of Implementation Component 2 planned activities for 2021-2022 Sub-projects

S/No	Activity	Status	Remarks
1	Development of micro-catchment plan and subsequent multi year	100	25 Micro-catchments areas identified
2	Identifications & list of vulnerable households, heads and dependant	100% complete	Done
3	Identification of individuals households eligible for LIPW	100% complete	Done
4	Feasibility assessment and technical designs where structures are parts of interventions	100% complete	Done

5	Other requirement <ul style="list-style-type: none"> • Operation & maintenance plan • Implementation plan • Procurement plan 	100%	Done
8	Formation and training of CPMCs for community assets	100%	Done
9	Opening of Bank accounts for Community assets (Sub-Projects)	100%	Done
10	Safeguards Screening	50%	Done
11	Visit to KEFRI (Charcoal Briquette Making Technology)	100%	Done
12	Development of BoQ and Tender Documents for all sub-projects	100%	Done
13	Supporting CPMCs in Tender process for non-wage items. (advert, opening and evaluation)	100%	Done
14	Implementation of Sub-projects (Actual Works)	50%	Supply of Non-Wage items completed. Implementation of LIW is ongoing
15	Monitoring and Supervision of Works		Continuous

1.1. Component 3: Livelihoods Program

During the Financial Year (2021/22) a total of 416 Community Groups were funded to the tune of Kshs 208,000,000. For the 1st half FY 2021/22 a total of 187 groups received funding of kshs 93,500,000. For the 2nd half FY 2021/22 a total of 229 groups received funding to the tune of Kshs 114,500,000.

During this quarter NPIU, CIPIU and FP continued to monitor the activities of all the funded activities and give them support where necessary. All the 416 GCs were trained by the relevant PIST members. All the groups were trained on enterprise specific needs according to their activities, these included; group dynamics, financial management and records keeping. The development of Business plans for the all the was prepared, appraisal by the relevant PISTs and funding released. Table below shows the status of each activity.

Status of Component 3 planned activities for 2021-2022 FY

S/No	Activity	Status	Remarks
1	Identification of 416 Community Groups (CGs) to be funded 2021/22 Financial Year.	100%	Done
2	Development of Business Plans for all (416) CGs for FY 2021/22.	100% complete	Done for 1 st Half and 2 nd Half
3	Formation 416 CGMCs	100%	Done
4	Training of CGMCs for 1 st and 2 nd Half	100%	Done
5	Opening of CGMCs Bank accounts for 416 CGs	100%	Done
6	Appraisal of the 416 CGs by the Relevant PIST members	100%	Done
7	Safeguards screening for 1 st Half and 2 nd Half FY 2021/22	100%	Done
8	Release of funds to 416 CGs (1 st Half 187 and 2 nd Half 229)	100%	Released funding for all the CGs
9	Implementation of funded 416 CGs activities is on going	100%	Implementation of activities in progress
10	Monitoring of 1 st and 2 nd Half CGs activities		In progress

3.2.3 Turkana West Sub-County

During this period a number of activities were undertaken including;

- PIUs and PISTs Monitored the implementation of Sub-projects and CGs funded
- Refresher training for CPMCs and CGMCs done on Financial and Procurement issues by the PISTs, the PIUs and the Bank
- Commenced procurement of FY 2021/2022 sub projects
- Signed MOUs with the County Government secured for education sector sub -projects
- Tender documents preparation completed and contracts awarded
- County MOU secured for education sector sub -projects
- Refresher trainings for CFs and SMs done

1. COMPONENT 1: Social and economic services and infrastructure

Sector	Planned/Target	Completed	Ongoing
Education	23	13	10
Health	19	4	15
Water	65	1	64
Roads	7	3	4

Market infrastructure	5	1	4
Sanitation			
Sum total	119	22	97

Education Sector

The total number of education sub-projects planned were 23 out of which 13 are complete and the remaining 10 are ongoing.

Water Sector Progress

FY 2020-2021 and 2021-2022

SNo.	Project description	Yield (lts/Hr)	WQ status	Additional No. drilled Trials	Current status	Remarks
Nanam						
1.	Drilling and equipping of Lolemui BH, Nanam	1500	Saline	0	Drilled and equipped with exceptional of ancillaries works	Ongoing
2.	Drilling and equipping of Ngimerusuai BH, Nanam	0	0	1		Ongoing
3.	Drilling and equipping of Nakodopus BH, Nanam	3000	Good	0	Drilled, equipped, EST 21m ³ , Trough 6m long and kiosks provided	Completed
4.	Drilling and equipping of Lorus BH, Nanam	0		0		Ongoing

5.	Construction/De-silting of 10,000m ³ water pan at Edukon, Nanam					Completed
Songot						
6.	Drilling and equipping of Lokangae (Kalokupe) BH, Songot	0		3	Drilled and capped	Ongoing
Lokichoggio						
7.	Drilling and equipping of Kikeunae BH, Lokichoggio	1.5	Slightly saline	0	Drilled, equipped, plastic tank 10m ³ , Trough 6M long and kiosks provided	Ongoing
8.	Drilling and equipping of Loteteleit BH, Lokichoggio	0		1		Ongoing
Kalobeyei						
9.	Drilling and equipping of Natira (Kamiridi) BH, Kalobeyei	5200	Good	2	Drilled and equipped with exceptional of ancillaries works	Ongoing
10.	Construction/De-silting of 9,000m ³ water pan at Nakwasuguru, Kalobeyei					Completed
Letea						
11.	Drilling and equipping of Katelemot BH, Letea	1200	Saline ,high fluorides	3	Drilled and equipped with	Ongoing

					exceptional of ancillaries works	
12.	Drilling and equipping of Loritit BH, Letea	19400	Good, with bit of fluorides		Drilled and equipped with exceptional of ancillaries works	Ongoing
13.	Drilling and equipping of Tulabalany BH, Letea	1200	Highly saline	1	Drilled and capped	Ongoing
14.	Drilling and equipping of Loreng BH, Letea	3500	Good		Drilled and capped	Ongoing
15.	Construction of 50,000m ³ water pan at Narongole					Completed
Kakuma						
16.	Drilling and equipping of Kobuin BH, Kakuma	0		1		Ongoing
17.	Drilling and equipping of Lokore BH, Kakuma	5400	Good		Drilled and capped	Ongoing
18.	Drilling and equipping of Lotaka BH, Kakuma	7500	Good	1	Drilled and capped	Ongoing
19.	Drilling and equipping of Losajait BH, Kakuma	2000	Slightly saline		Drilled, equipped, plastic tank 10m ³ , Trough 6m long and kiosks provided	Ongoing
Lopur						

20.	Drilling and equipping of Lochoreedome (Ayananaengitira) BH, Lopur	1800	Slightly saline		Drilled and capped	Ongoing
	Construction of 7,000m ³ water pan at Kalopusia					Completed

Challenges

1. Drilling of dry wells
2. Collapsing boreholes even after successful drilling
3. Some sites have poor prospect for water e.g. Tulabalany, Lotieng and Kobuin
4. High salinity and fluorides

Recommendations

1. There is need to provide for equipping of alternative sources where drilling prospect have been unsuccessful
2. There is need for solarizations, pipeline extensions, rehabilitations, storage construction where communities feel that, it could be alternative way they can access water
3. Community need to sensitized on the proposals where drilling of a new water sources has been unsuccessful
4. County drilling units can be supported to drill in high risks areas
5. Where contractors have made successful wells beyond 130m threshold, equipping ancillaries can be recommended and which also fast-tracks implementation of various project facilities FY2020/21
6. Contractor takes responsibilities for survey and drilling, rather providing survey report when he is expected to drill wet BH

Health Sector

This sector has 19 sub-projects in total, most of the sub-projects were at percent 90% and 20 sub-project complete.

Financial year 2021/2022

- Commencement of the procurement ongoing
- County MOU secured for water sector sub -projects
- Commencement of the trainings for CPMCs on financial and procurement

Roads Works

The project intention in access roads provides connectivity to sub projects in component 1 and 2 implemented under KDRDIP.

In FY 2021/2022 the project had 7 roads works of which 4 are complete and 3 are ongoing. The targeted activities in the sector include construction/spot improvement/Routine maintenance in order to improve their motor ability and access to the amenities funded.

Market infrastructure sector

This sector has 5 sub-projects whereby the procurement process is ongoing, county MOU secured and trainings for CPMCs on financial and procurement done.

Component 2: Environment and Natural Resource Management

The component strives to promote rational utilization of all the natural resources for optimum production to fulfil the present need with minimal degradation of Natural Resources such as land, water, and environment for the future generation, restore ecological balance, and improved living conditions of the poorer.

Sector	Planned/Target	Completed	Ongoing
Land restoration through pasture development and grass reseeding/tree nurseries	4	0	4
Land reclamation (irrigation and use of flood water)	22	4	18
Land rehabilitation through soil and water conservation			
Solid waste management, digging waste disposal pits			
Energy	25	5	20
Sum total	51	9	42

Way forward

Community to continue with land preparation for planting and mobilize LIPW for expansion of farm, clearing prosopis, renovation of Water Harvesting structures in readiness for planting.

CPMC supported by PIST to procure tools which should include a power saw and a mobile tool sharpening equipment. Farmers must address the question of sustainability and continuity of crop production. There's need to set aside a good size of the farmland for pasture production.

PIST to support discussion and proposal for diversion of water flow toward the farmlands.

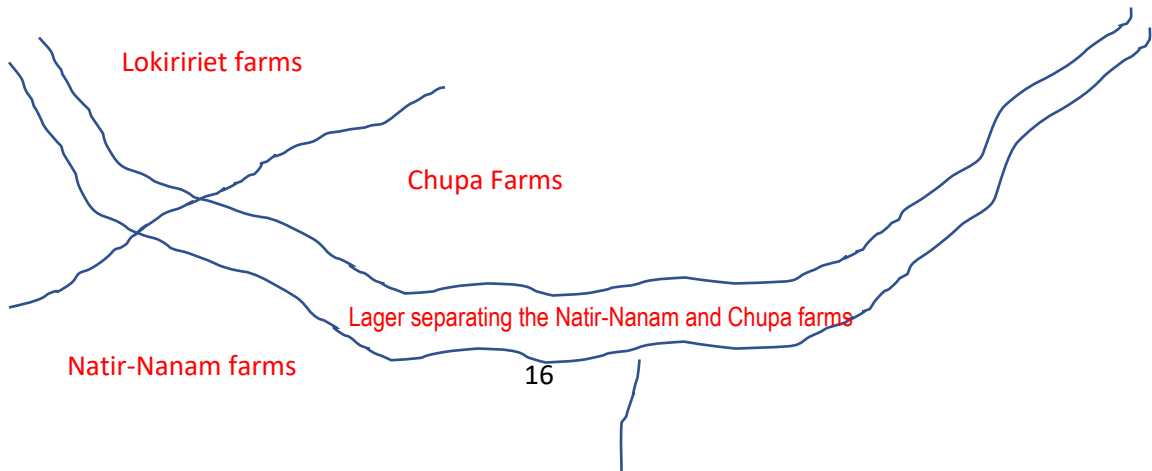
Chupa Farm, Arot A and B farms,

Farming initiated in 2018. Current 200 LIPW beneficiaries (160 women and 40 men). Target area 500 acres.

Progress: Prosopis cleared Chupa, Arot B farms previously covered with prosopis. Structures rehabilitated in both farms. WH structures rehabilitated and New bands constructed in Arot A farms.



Progress: Rehabilitation of 10 Trapezoidal bands in Arot A farms bush clearing and fencing of Arot A farm done



LIPW supported activities include

Bush clearing, removal of prosopis including de stumping, construction of WHs Continues. Procurement process for tools finalized.

Way forward

Assessment potential for water diversion and water spreading bands and proposals for long term provision of water for the farms and sustainability eg boreholes or water pans not done by time of this visit.

AROT A FARMS. BUSH CLEARING AND ERADICATION OF PROSOPIS.

Farming started in 2013 and initially 10 acres covered with 10 water harvesting trapezoidal bands. Clearing of 50 acres' progresses well and construct of additional bands recommended. Farming is to use flood surface water /spate irrigation.

A water pan exists nearby but cannot be used for irrigation. Water may be diverted into farms from a major lager running through one edge of the farm.

Letea Land Rehabilitation Construction of Gabions Across Tarach River.

Damage excessive. Need for a comprehensive civil engineering feasibility assessment before community engages.

Loito Land Rehabilitation

The community had migrated to a neighboring village due to insecurity at the time when CPMCs were being formed. The CPMC membership fell on persons living within the host community. When the Loito members moved back to their own village, management of the subproject became difficult due to absence of CPMCs on site. The community informed that they received cash transfer once in October 2022 after clearing the land in November 2021. The activity stalled due to hiccups as a result of CPMC members being in another distant settlement. The farmers planted sorghum which dried up.

Procurement of chain-link, cement and tools to support construction of weirs and diversion of surface run-off to farms was done. The activity has not been implemented but the farmers with support of SM and PIST will engage immediately to see this implemented and completed. add

Observations

The LIPW members are 150- with 135 women and 15 men.

Clearing and maintenance of farms free of prosopis continues. Fencing of the entire farm is essential to reduce intrusion of livestock.

In order to divert and spread flood water over the farms, it is proposed to construct about 5-6 check dams that traverse the waterway which runs along part of the farm. This would address both control of soil erosion but also water spreading.

PIST to support communities' layout the contour lines for the construction of semicircular bands

Lokipoto Land Rehabilitation-soil and water conservation to support Farming

400 beneficiary Farmers 106 LIPW workers (100 women and 10 men)

About 30 acres of land cleared

Water harvesting structures are to be made and renovated. Water diversion, has been initiated under mechanization to excavate diversion channels.

The beneficiaries are implementing gully healing and water spreading and continue clearing fencing repairs.



Discussing with CPMC members at Lokipoto farms- land has been cleared and WH structures continue to be constructed and rehabilitated.

Kalobeyei Afforestation Subproject- Next to Refugee Camp

CPMC formed, opened and validated account- Ksh 5 million available for LIPW. Approximately 100 acres targeted and LIPW 200 beneficiaries.

The proposed area lies between Kakuma-Loki road and the Kalobeyei refugee camp. The site is yet to be confirmed from key stakeholders that it is available for tree planting. The County Government, UNHCR need to consent on its proposed use.

This subproject has potential to benefit both refugees and host communities. It is therefore well positioned to take advantage of more development partners related to refugees and possibly set the stage for concepts that have been of interest to second phase programs in DRDIP programs in other countries.

The technical team proposed to include early enough other stakeholders potentially with high interest such as County Government, UNHCR, Peace Wind Japan (PWJ), Lokado, WFP, FAO etc may be considered or approached for partnership.

Way forward

- SM/County Coordinator to mobilize stakeholders to partner in the subproject.
- Ascertain the specific site available for the subproject
- Consider Fencing and pathway for livestock passage
- Consider issues of water-borehole drilling, drip irrigation etc.
- Consider additional funding
- Consider purchase of seedlings from existing KDRDIP nurseries.

Ng'igoloki Land Rehabilitation, FY 2020-2021

- 200 beneficiaries (LIPW and owners of farms)
- Target area about 30 acres with 20 bands existing and targeted for renovation.
- Seeds already provided in readiness for planting- 2kgs per individual hence 400kgs of each proposed crop: Sorghum-400kgs, Cowpeas-400Kg and maize 400kg.

Activities implemented: Bush clearing, de-stumping, Construction of Water harvesting structures and control soil erosion. Farm on individual pieces and tending of the crop.

Way forward/ Recommendation

Constructed multipurpose check dams along the gully. Conserve soil, heal gully and spread the surface run-off (water) to the farms. At least five checks need to be constructed. Technical assessment necessary.

Explore possibility for borehole drilling and funding source in addition to spate irrigation. (Action: Rapid joint field assessment PIST/CIPIU/Components 1&2 not done by time of visit.

COMPONENT 3: LIVELIHOOD PROGRAM

In the last financial year Turkana County received KShs 323,500,000 support of 291 in the first half and 356 in the second half. The funds were disbursed to community groups across the 7 wards. The social mobilizers and community facilitators were brought on board on July 2022 on casual basis to support the component and ensure compliance to 5 core principles as specified in the community operational manual.

2. Refresher Training of Community Level Committees (CPMCs and CGMCs) on project processes, financial management, GRM & GBV.

3. Screening of environmental & Social Safeguards sub projects & actions taken

a) Safeguards

Once the workplans were agreed and approved safeguards documents were developed and this is a requirement before funds are released. Sub- projects screening meetings were held for 100% of projects sites for 2021/2022 financial year.

The community meetings were done to identify any social and environmental impacts and mitigation measures, to get agreement on voluntary land donation and sensitize beneficiary communities on grievance redress mechanism, logged complaints and provided feedback.

The safeguards continue to prepare documentations for sub-projects for the new financial year 2022/2023. The safeguards instruments are being prepared by the environmental safeguard working on the ESMPs and the consultants doing Summary project reports (SPRs). The complete safeguards documents will be shared with the NEMA director for approval.

Key preliminary safeguards documentations prepared include;

- Screening checklist
- Community land resolution agreement
- Bidding documents
- Grievance redress mechanisms
- Summary project report (SPR)
- Environmental and social management plan (ESMP)
- Environmental and social management and monitoring plan (ESMMP)

Safeguards monitoring

This has been one continuous activity which is carried monthly by field visits and through community facilitators in the 34 villages. The focus has mainly been on construction works, Labour intensive public works and livelihood activities. The monitoring has helped in ensuring safeguards compliance is there in the projects with observable risks in the sub-projects. Common risks included; solid waste management, odour and dust, health, safety and occupational risks and community health, common hazards and re-vegetation.

Financial year 2022/2023

Funds for component 1 and 2 first half were released by the NPIU to the CIPIU account in December 2022. The processes of disbursement from the CIPIU to the community accounts and community procurement are ongoing.

Livelihood component

- Proposed Community groups for funding are 329
- Planned Development of the BPs for CGs and Producer organization
- planned Appraisal to be done including verification and screening.

3.2.4 Garissa County

In summary County Integrated Project Implementation Unit (CIPIU), Project Implementation Support Team (PIST), the Facilitating Partner with support from NPIU carried out the following activities: -

- Implementation of sub-projects in component one for FY 2021.2022 with 70 sub projects completed and 12 sub projects ongoing
- Implementation of sub projects under component two for FY 2021.2022 with 11 sub projects completed and 23 sub projects ongoing.
- Preparation of safeguard instruments
- Monitoring of the funded Community Groups for FY2020/21 and FY 2021/2022
- Monitoring of the implemented sub-projects for FY 2021-2022 for Component 1 and 2.
- Regular Joint Meetings with PIST, CIPIU and NPIU.

Implementation of subprojects

Preparatory activities for the subprojects of the financial year 2022-2023 is ongoing with close monitoring by National Project Implementation Unit, County Integrated Project Implementation unit and project management committees, the subprojects are expected to be implemented as per GoK guidelines and specifications.

Community groups funded are currently implementing their business plans with close monitoring from the PISTs and PIUs.

Preparation of Environmental Social Impact assessment report (SPR)

The project contracted a Lead expert, Associate and enumerators to carry out Environmental and social Impact Assessment as a way of complying with the provisions of national policies and framework at local and international standards.

In carrying out the study, various methodologies were used to gather data and obtain vital information of the project including the anticipated impacts, the proposed mitigation measures and the Environmental Monitoring Plan that will be implemented throughout the project.

Conflict and Grievance Resolution Mechanism

In order to adequately address and manage the risk related to the grievances emanating from the project county integrated project implementation unit establish a Grievance Redress Committee (GRC), building on the capacity of GRM committee and those local institutions involved in management of such resources. Each village have a Grievance Redress Committee (GRC) established for the purpose of handling grievances related to project investments.

In summary County Integrated Project Implementation Unit (CIPIU), Project Implementation Support Team (PIST) with support from NPIU carried out the following activities: -

Table showing status of 2021/2022 FY activities

S/No	Activity	Status	Remarks
1	Identification of Sub-projects sites	100%	Completed
2	Feasibility study of sub-projects	100%	Completed
3	Preparation of BQs and Designs per sub-project	100%	Completed
4	Preparation of MOUs per sector	100%	Completed
5	Hydrogeological surveys for boreholes	100%	Done for all the Boreholes to be drilled
6	Detailed procurement plans per sub-project	100%	Completed
7	Operation and Maintenance plan per sub-project	100%	Completed
8	Implementation schedule per sub-project	100%	Completed
9	Formation and training of CPMCs on Financial management and procurement per sub-project	100%	Training of CPMCs done
10	Opening of Bank accounts per sub-project	100%	Completed
11	Preparation of safeguards documents	80%	On going
12	Implementation of sub projects	80%	Ongoing

ENVIRONMENTAL AND NATURAL RESOURCE MANAGEMENT

During the period team comprising of PIUs and PIST continued with implementation of the component's activities and the status of different activities is as follows:

The 2020/2021 FY subprojects are completed while the 2021/2022 are at 20% completion (majority ongoing). The table below summarizes the overall progress of implementation per Sub Counties.

Status of Component 2 planned activities for 2021-2022 Sub-projects

S/No	Activity	Status	Remarks
1	Identification of the sub projects	100%	Done
2	Identifications & list of vulnerable households, heads and dependant	100%	Done
3	Feasibility assessment and technical designs where structures are parts of interventions	100%	Done
4	Other requirement <ul style="list-style-type: none">• Operation & maintenance plan• Implementation plan• Procurement plan	100%	Ongoing
5	Formation and training of CPMCs for community assets	100%	Done
6	Opening of Bank accounts for Community assets (Sub-Projects)	100%	Some of the sub-projects have existing accounts
7	Safeguards screening	100%	On going

LIVELIHOOD PROGRAM

In the financial year (2020/21) a total of 810 Community Groups were funded to the tune of Kshs 405,000,000. During the FY 2021/22 a total of 850 groups received funding of Kshs. 425,000,000.

During the period under review NPIU, CIPIU and FP continued to monitor the 850 groups funded in 2021/22 FY activities and gave them support where necessary. All the 850 CGs for FY 2021/22 were trained by the relevant PIST members. All the groups were trained on enterprise

specific needs according to their activities these included; group dynamics, financial management and records keeping.

Funded Community Groups since inception of the Project

County	Sub County	2019/2020 funded CGs	2020/2021 1 st Half funded CGs	2020/2021 2 nd Half funded CGs	2021/22 1 st Half CGs	2021/22 2 nd Half CGs	Total
Garissa	Dadaab	40	157	158	134	183	672
	Fafi	40	152	145	124	174	635
	Lagdera	40	99	99	90	145	473
Totals		120	408	402	348	502	1780

Table below show the status of each activity.

Status of Component 3 planned activities for 2021-2022 FY

S/No	Activity	Status	Remarks
1	Identification of 850 Community Groups (CGs) to be funded 2021/22 Financial Year.	100%	Completed
2	Development of Business Plans	100%	Completed
3	Formation 850 CGMCs	100%	Done
4	Training of CGMCs for 1 st and 2 nd Half	100%	Done
5	Opening of CGMCs Bank accounts for CGs	100%	Done
6	Appraisal of the 850 CGs by the Relevant PIST members	100%	Done
7	Safeguards screening for 1 st Half and 2 nd Half FY 2020/21	100%	Done
8	Release of funds to CGs FY 2021/2022	100%	Completed
9	Implementation of business plan	100%	Done

During the current quarter additional CGs and Producer organization will be funded to implement their business plans.

4.0 COMPONENT 4: PROJECT MANAGEMENT, MONITORING AND EVALUATION AND KNOWLEDGE SHARING

During the quarter under review the FP, CIPIU, NPIU, PISTs with support HEIS team monitored the implementation of sub-projects carried forward to this financial year.

During the quarter the following are the summary of major activities that were carried out: -

- The FP, CIPIU, NPIU with support from relevant PIST members continued to monitor the implementation of the 2020/21 and 2021/2021 FYs sub-projects and carried forward to current financial year.
- The team also undertook the relevant documentation pertaining to the FY2021/2022, such as MoUs, Feasibility studies, BoQs, Designs, Hydrogeological surveys, Procurement Plans, Screening e.t.c.

- Conducted meetings to discuss project activities. Some of the issues discussed included; Progress on agreed action in Aide Memoir, CGMCs and CPMCs Financial returns, safeguards compliance documentation.
- The project safeguard teams followed up on handling outstanding grievances reported including; Nanaam Ward Community, Barsabeen borehole among others.
- IGAD RPSC Meeting was held in Gambella, Ethiopia with 3 KDRDIP PIU staff participating.
- 9th WBISM field visits were held between 6th-11th November 2022 in Turkana County. Draft report shared.
- AIE for the 1st Half FY 2022/2023 were issued to counties
- E&S audit was conducted between 20th November to 5th December 2022. Draft report to be shared.
- KDRDIP online visualization portal dashboards were developed.

Sample Pictures and narration of activities undertaken

WB and PIU Consultative meeting

Project PIU and the WB held a consultative meeting to discuss KDRDIP overall progress on implementation of the project and discuss actions from November 2021- February 2022 Aid Memoire Key action points. The Meeting took place on 4th October 2022 at KICC, Nairobi.



IGAD RPSC MEETING

The 9th IGAD DRDIP RPSC MEETING at Grand Resort Hotel Gambella Ethiopia. Kenya was represented by MR Wilfred Omari Project Manager, Josephat Waweru Head component one, John Karuma Agricultural Expert and Geoffrey Kosgei Refugee Affairs SECRETARIAT.



Delegate from KDRDIP during the DRDIP RPSC Meeting



Mr. Wilfred Omari receiving the Ethiopian gift on behalf of the Kenyan delegation from His Excellency the President of Gambella Regional Government.

9th WB Implementation Support Mission, Turkana County

The 9th mission was conducted by the WB together with PIU staff In Turkana County between 6th -11th November 2022. The team starting off with a courtesy call to the County Commissioner and thereafter County Government Leadership in Turkana having engagement with the Governor and other senior Official. During the exercise various teams were engaged including the Project Implementation Support Teams (PISTs) in Turkana County, community members and project beneficiaries.

The team visited various project sites in the county which included schools, health facilities, water systems, rural access roads, Labor Intensive Public Works (LIPW) sites and livelihood activities. The Mission findings from the field would be supplemented by the presentation on progress realized since the

last mission. The World Bank team expresses its gratitude to Government of Kenya counterparts for their hospitality and support throughout the mission.

Key Recommendations

- CPMCs are encouraged to charge some levies especially at water points to ensure that they have funds for maintenance of the sub project.
- Project to promote integration of component activities to ensure sustainability and complementarity of project activities.
- PISTs were encouraged to continuously hand hold CPMC's and ensure correction of defects and quality of work.
- CPMCs were encouraged to have publicity sign posts indicating activities of the sub projects
- CPMCs were also encouraged to ensure Proper record keeping and accountability of the funds.
- SMs and CFs to continue reporting progress of all the sub projects and CGs in their respective areas.
- Infrastructural sub projects to have water harvesting facilities
- Quality tests to be done for the sub projects
- Fencing and securing of project sites to be prioritized

Summary of sub projects and CGs Visited and their GPS Location

Name	GPS Latitude	GPS Longitude	Remark
Losajait Borehole	3.721	35.265	BH solarized, piping done, construction of water trough and water kiosk
Kakuma Subcounty Hospital	3.705	34.883	Construction of Kakuma Sub-county Hospital mortuary, maternity wing, masonry fence and laboratory. All completed and awaiting equipping
Akumae-lem self help group	3.709	34.878	Group engaged in Poultry Farming and table banking
Nakodopus Borehole	4.212	34.552	Activities undertaken are drilling and equipping borehole, elevated water tank, water kiosk, solar panel ongoing at the completion stage.
Aic Lokichogio Primary School	4.207	34.345	Construction of four classroom, library and pit latrines for Lokichogio mixed primary school complete and operational
Kalodokunyuk Farm in Lokichogio	4.207	34.339	40 HA of land reclaimed
Lokiririet Farm in Lokichogio	4.183	34.405	Expansion of the farm through clearing of prosopis and making of bunds through LIPW
Kapana Ngaren SHG	3.936	34.561	The group is engaged in Farming and table banking

KALOBAKORI YOUTH GROUP	3.883	34.569	Group engaged in Livestock
Akisitamun Youth Group	3.880	34.567	Group engaged in Table Banking
Kalobeyei Health Centre	3.774	34.626	Maternity Wing, Female wards, staff quarters, pit latrine and male ward(ongoing)

Financial Management

During the period under review the project followed on the financial returns for the Sub projects and CGs funded and coordinated preparation of financial reports. The project remains with a A balance of slightly about Kshs. 2 billion to be implemented during the current AWP&B for the FY 2022/23 that is with an extension of 1 year approved.

Major activities implemented during the 2nd quarter include;

- Following up of financial returns for CPMCs and CGMC

Implementation of AWP&B FY 2022/2023

1st Half Disbursement

Component 1	Sub county	No. of sub projects	Amount (Kshs.)
	Dadaab	14	70.290.000,00
	Lagdera	14	68.536.966,00
	Fafi	7	61.900.000,00
	Turkana west	30	174.128.000,00
	Wajir South	35	107.444.763,00
Total		100	482.299.729,00
Component 2	Dadaab	16	43.418.198,00
	Lagdera	8	29.124.602,00
	Fafi	2	36.970.000,00
	Turkana west	11	103.000.000,00
	Wajir South	15	44.500.000,00
Total		52	257.012.800,00

- During the quarter an AIE amounting to **Kshs. 482, 299,729.00** for the 1st half FY **2022/2023** to fund 100 community investments subprojects across all the sub-counties of Dadaab, Fafi, Lagdera, Wajir South and Turkana West.
- A total of Kshs. **70,290,000.00** was allocated to fund **14** sub projects in Component 1 for Dadaab sub county.

- A total of Kshs. **68,536,966.00** has been disbursed to fund **14** sub projects in Component 1 in Lagdera sub county. Whereas Kshs. 61,900,000 was allocated to Fafi sub county to fund 7 sub projects.
- A total of Kshs. **174,128,000** has been disbursed to fund **30** Community investments in Component 1 in Turkana West sub county. Wajir South was allocated kshs. **107,444,763.00** to fund 35 community investment sub projects.
- During the period a total **52** sub-projects under component 2 were allocated Kshs. 257,012,800.00 For compTurkana West received Kshs. **872,290,800** for the **FY 2020/2021** to fund environment and natural resource management sub projects

Social And Environmental Safeguards

The Environmental and Social Safeguards Specialists together with the lead experts coordinated preparation of instruments for all the sub-projects to be funded under the 1st and 2nd Half FY 2021/2022.

The sub projects and CGs are screened and instruments prepared to ensure compliance with the Bank requirements to safeguards instruments on Environment and social issues, Vulnerable and Marginalized groups (VMG's) involvement during the development and formulation of AWP&B, Project committee constitution and training if any, Grievance Redress Mechanism and handling structure at the sub-project level among many other pertinent issues.

The meetings held in every location/area with identified sub-project investment was well documented and will be used to complete the summary safeguards report and together with the signed participants list, voluntary land donation forms for each sub-project in a public or private land and minutes of the safeguards screening meetings at the project site will be submitted to NPIU/WB Safeguards Specialists once completed and the necessary safeguard instruments are developed.

The County Safeguards Specialists also screened the **Community Groups (CG's)** funded and submitted to the County Project Coordinator the list of the eligible CGs for release of funds to **Support to the Community and safeguards screening process.**

Consultations were to be held with CPMC's, VLC Member, local opinion leaders, religious leaders, chiefs and assistant chiefs among others, however because of the drought the village baraza could not attain the required quorum for the meeting and the meetings have been rescheduled for further dates maybe May when it might have rained and the communities are available. The safeguard team carried out refresher training to CFs and SMs in Turkana to enhance their capacity towards supporting safeguard function and reporting.

Other key activity undertaken by the safeguard team during the period under review include conducting the environmental and social audit between 20th November -5th December 2022 in the Project area. The objective of the audit was to **assess the documentation prepared for the projects and t conduct audit of the sub-projects sampled.**

Methodology of the E&S audit

The team conducted field visits, assessed the SPR documentation and interviewed beneficiaries.

Scope of the Audit

The sub-projects identified were from component 1 and 2 and covered water, health, education, roads, markets, and environment. In the water sector boreholes, water pans and masonry and steel tanks were audited. The health facilities visited included the maternity wards, renovation of hospital facilities, staff quarters and dental unit.

Education facilities audited included school administration block, kitchen, classrooms, dormitories, and staff quarters among others. The report on the activity being drafted and will be shared.

Procurement

During the period under review the FP's contract for Fafi, Dadaab, Lagdera and Wajir South expired but were given a no cost extension to finalize pending documentation and allow time for their payments. At the same time with the exit of FPs, the project is exploring continuing to support the communities in implementation. It has been recommended that the project engages the SMs and CFs on casual basis to continue performing their work even after the exit of the FP.

M&E, Communication and ICT

KDRDIP Online Visualization Portal

During the period under review the project developed online visualization portal with the support of the Communication, ICT and M&E specialists. The team managed to digitize all the sub projects funded since FY 2019/20 to 2021/22 and presented in a spread sheet. The details captured included the basic information and the GPS location of the sub projects. The idea was to capture and create the map from the information and present them in various dashboards. The dashboards created by included:

- i. Project overview dashboard
- ii. Component one overview dashboard
- iii. Sub County specific dashboard for the five sub- counties.

The exercise managed to capture details of over 942 sub projects in the three county project areas that were funded since inception of the project to date and presented them in KDRDIP MAP in GIS.

Objectives of the Portal

- To digitize project information and make it easily available to users
- To promote the image of the project as a case of best practices in information storage and knowledge sharing
- To help project implementers and policy makers in decision making

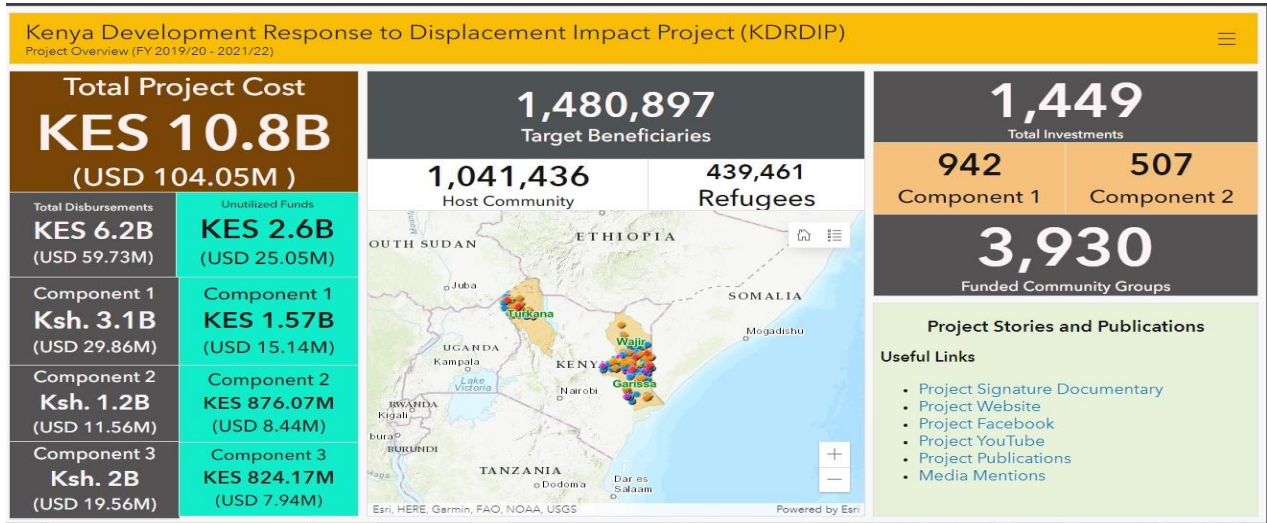
Observations

- i. The team observed that it can be possible to update information of the sub projects and display the correct information in an online visualization portal for instance the GPS locations
- ii. It was noted that varied project information could be consolidated and present only areas of interest through various dashboards
- iii. The dashboards created could be integrated with other project information centres and as such the dashboard created was embedded in KDRDIP website
- iv. The Project has gained much-needed technical interactions from the support of IGAD in terms of utilizing different tools that can be used to communicate the Project outputs and impacts.
- v. Project has over time collected a lot of information / data on sub-projects and community groups. Based on this, different dashboards could be developed to serve as a platform for information disclosure to the project stakeholders.

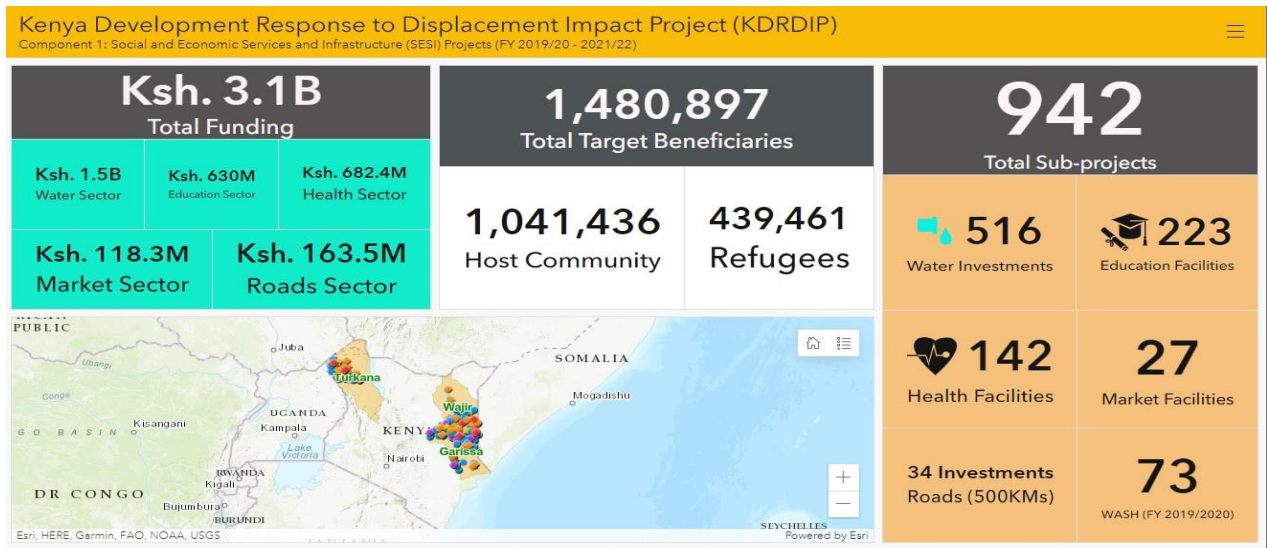
Recommendations

- i. The project teams to validate information captured in the developed Dashboard
- ii. The project to determine a systematic way of collecting project information including the GPS to make the work of data capture much easier and efficient.
- iii. The activity of digitizing project information and mapping in GIS is very tedious and thus require the project to allocate resource for successful capture of the necessary information.
- iv. The PIU team requires a dedicated team to continuously capture and update the project information in GIS and other platforms such as MIS.

Dashboards



Screen shot of Project Overview Dashboard



Screen shot of Component 1 overview Dashboard



Team brainstorming on how to execute the exercise at Palm Oasis Hotel, Garissa

5.0 Implementation Challenges

During the period under review, a number of challenges had been experienced during program implementation as mentioned below;

- **Facilitating Partner Contract:** The FPs contract came to an end in December 2022 and need to have alternative way to support implementations of project activities for Garissa and Wajir Counties.
- **Drought:** During the period under review, implementation of project activities at community level was affected by the prevailing drought. It was difficult to get and meet some project beneficiaries at village level as most of them shifted to far areas to seek pasture and water for their livestock. The communities are now struggling with their livelihoods as livestock which is their mainstay is dying in mass. Carcasses of dead livestock litters road sides, water points and settlements.

The most affected is component 2 which is dependent on rainfall. Sub-projects such as tree planting, tree nursery and planting of fruit orchards and woodlots as well as wood lot have been very difficult to implement.

- **Work load:** With the increase in the number of Sub-projects, the amount of documentation required has also increased, thus increasing the workload for CIPIU staff. This clearly shows that CIPIU is also handling volumes of project records which require the involvement of support staff. This has caused delay in sub-project implementation. Further inadequate staff at the CIPIU after resignation of two safeguards specialist each in Wajir and Turkana increase workload of the remaining staff.
- **Insecurity:** The security situation in towns near the Somalia boarder is not reliable. Recently, a drilling company contracted by the community was attacked in Gerille Somalia, near the Kenyan Border. Another incident reported in the neighborhood of the project area involving KeNHA engineers killed in suspected Al Shabaab bomb attack in Bura while on

official duty. The security situation in towns near the Uganda and South Sudan boarder are equally insecure attacks by cattle rustlers oftenly reported.

- **Vastness of the area**; the project covers a wide area and distances and poor road network hence hindering access and monitoring to some areas.

CONCLUSION

During the reporting period a number of activities have been undertaken despite the challenges noted above. Most of the statutory documentations were developed and this includes BQs, feasibility studies, O&M plans and Procurement plans for all the sub-projects. Further the project undertook the preliminary screening of all the sub-projects in component 1, 2 and 3. Additionally the project carried out and continue monitoring implementation of sub-projects and CGs.

In the coming quarter the project plans to fast track: -

- The completion of the FY2021/2022 sub-projects.
- Commence implementation of the FY 2022/2023 sub-projects and livelihood program.

Annexes



GARISSA PROGRESS
STATUS REPORT (1)



Result framework
achievements and re



KDRDIP ISM AM
.pdf



Wajir 2nd Quarter
Report FY2022-2023



TURKANA 2ND
QUARTER 2022-2023